

Outlet at end of Gutter Run

System	Gutter Fixed Level		Gutter Fixed at 1:350 fall	
	Gutter Flow (litres/sec)	Roof Area m <sup>2</sup>	Gutter Flow (litres/sec)	Roof Area m <sup>2</sup>
<b>Half Round</b> 68mm Circular Downpipe	0.92	44	1.17	56
<b>Niagara</b> 68mm Circular Downpipe	2.40	115	2.90	139

Outlet at centre of Gutter Run

System	Gutter Fixed Level		Gutter Fixed at 1:350 fall	
	Gutter Flow (litres/sec)	Roof Area m <sup>2</sup>	Gutter Flow (litres/sec)	Roof Area m <sup>2</sup>
<b>Half Round</b> 68mm Circular Downpipe	1.80	86	2.60	125
<b>Niagara</b> 68mm Circular Downpipe	4.50	216	5.30	254

FloPlast Limited  
Castle Road  
Eurolink Business Park  
Sittingbourne  
Kent ME10 3FP  
UK

Tel: 01795 431731

Sales Office Direct Line:  
**01795 421422**

Fax:  
**01795 431188**

E-mail:  
sales@floplast.co.uk

Website:  
www.floplast.co.uk



'Cast Iron' effect Half Round & *Niagara*<sup>®</sup> Rainwater Systems

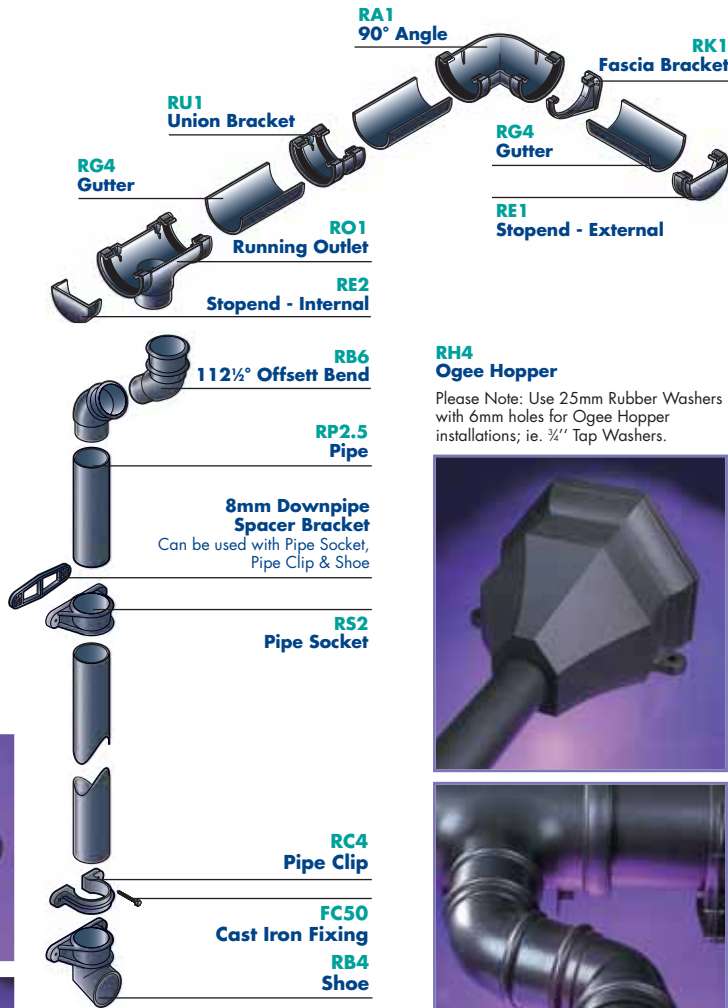
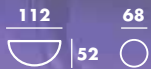


## HALF ROUND "CAST IRON" 112mm/68mm Rainwater System BS EN 12200 - 1:2000 (Downpipes & fittings)

New from **FloPlast**, Half Round "Cast Iron" effect guttering system, classic styling and a maintenance free finish.

- 10 Year "Cast Iron" Colour Guarantee.
- BS Kitemark, KM 501316.
- Significant cost saving over traditional Cast Iron.
- Pre-fitted gutter seal retaining clip system for fast user friendly installation.
- Pre-lubricated seals.
- All the benefits of PVC, for quick and easy installation.

Dimensions (mm)



### RH4 Ogee Hopper

Please Note: Use 25mm Rubber Washers with 6mm holes for Ogee Hopper installations; ie. 3/8" Tap Washers.

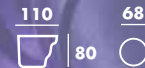


## Niagara® OGEE "CAST IRON" Rainwater System BS EN 12200 - 1:2000 (Downpipes & fittings)

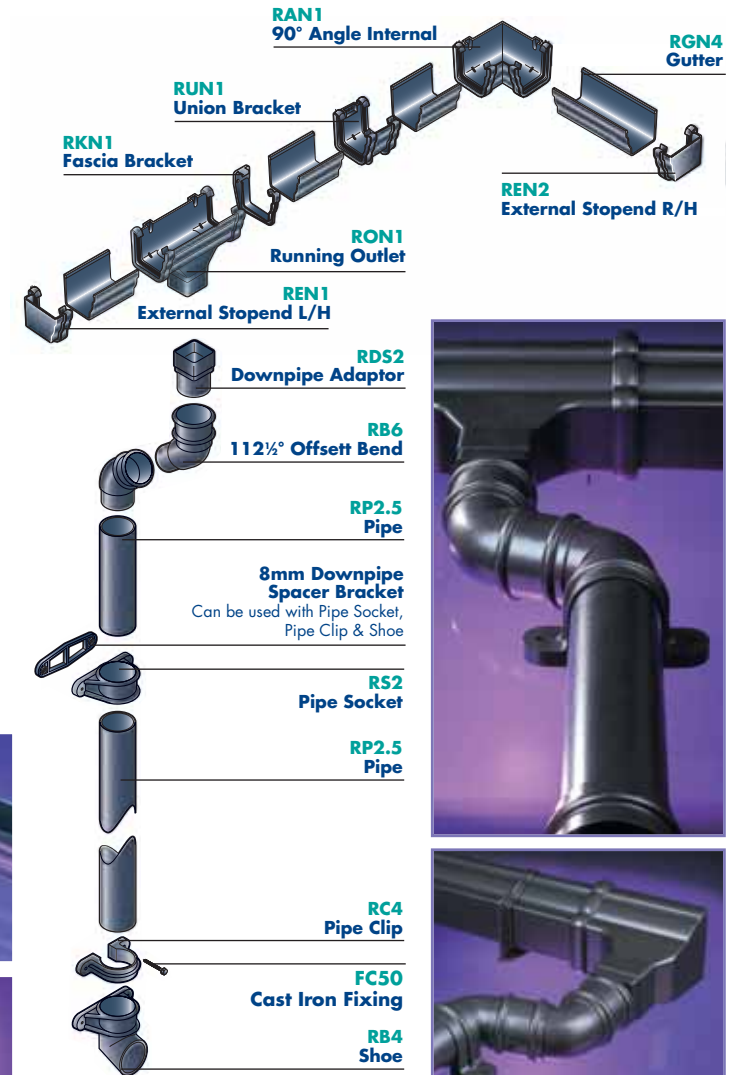
**Niagara®**, a traditional ogee style profile is also available in a "Cast Iron" effect finish.

- One of the highest capacity PVC-U domestic rainwater systems on the market.
- Revolutionary designed moulded water-tight seal and retaining clip pre-fitted for fast user friendly installation.
- Extremely cost effective solution for old style building refurbishment and new build installations.
- Traditional style ogee Hopper available.
- Black fixing bolts available.

Dimensions (mm)



FloPlast recommend the use of lubricant on all gutter seals for ease of fitting and for improved performance.



Important when ordering:  
To indicate "Cast Iron" on your order the following code suffix should be used: CI-Cast Iron.



## Niagara® Ogee “CAST IRON” effect Rainwater System BS EN 607:2004, BS EN 12200-1:2000, BS EN 1462:2004

Niagara®, a traditional ogee style profile is also available in a “Cast Iron” effect finish.

- One of the highest capacity PVC-U domestic rainwater systems on the market.
- Revolutionary designed moulded water-tight seal and retaining clip pre-fitted for fast user friendly installation.
- Extremely cost effective solution for old style building refurbishment and new build installations.
- Traditional style ogee Hopper available.
- Black fixing bolts available.

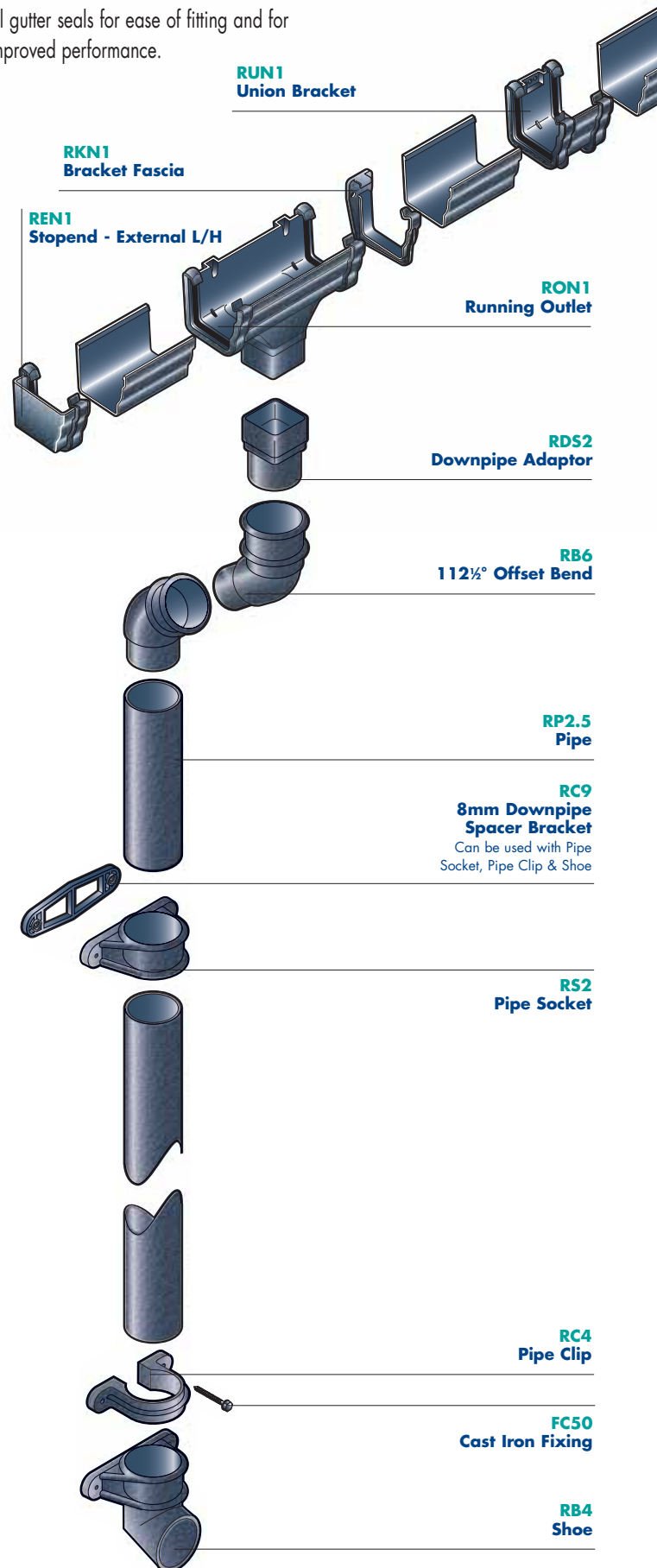
### Colours

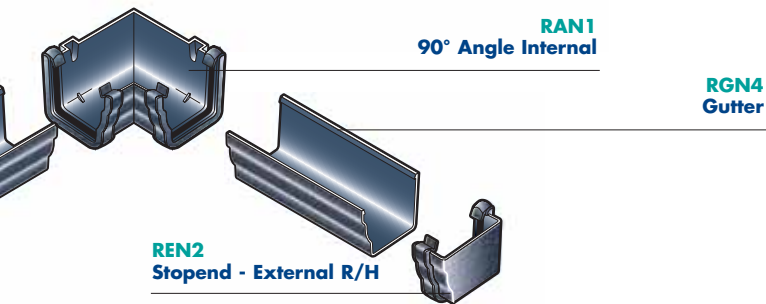


### Dimensions (mm)



FloPlast recommend the use of lubricant on all gutter seals for ease of fitting and for improved performance.





**RAN1**  
90° Angle Internal

**RGN4**  
Gutter

**REN2**  
Stopend - External R/H

**Universal Rise & Fall Rafter Bracket**



CODE  
RF1  
(Universal)

**Top Rafter Bracket**



CODE  
RR1

**Side Rafter Bracket**

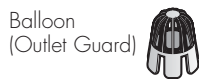


CODE  
RR2

**Leaf Protection Systems**



FloGuard  
(5m pack) CODE  
FG1



Balloon  
(Outlet Guard) CODE  
OG1

**Drainguard**



Black CODE  
DG1

**Cast Iron Fixings**



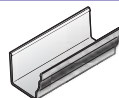
CODE  
FC50  
12 gauge x 50mm Stainless Steel  
fixings for "Cast Iron" Range  
(Socket Fixings)

**Spares/Ancillaries**

Gutter Clip CODE  
RRNC1  
Gutter Seal RRNS1  
400ml Silicone Lubricant SL400  
Spray

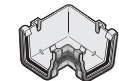
**Gutter & Fittings**

**Gutter**



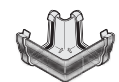
CODE  
RGN4  
RGN2

**90° Angle - Internal**



CODE  
RAN1

**90° Angle - External**



CODE  
RAN2

**135° Angle - Internal**



CODE  
RAN3

**135° Angle - External**



CODE  
RAN4

**Stopend - External L/H**



CODE  
REN1

**Stopend - External - R/H**



CODE  
REN2

**Stopend - Internal L/H**



CODE  
REN3

**Stopend - Internal - R/H**



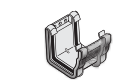
CODE  
REN4

**Fascia Bracket**



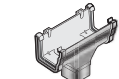
CODE  
RKN1

**Union Bracket**



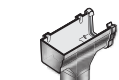
CODE  
RUN1

**Running Outlet 65mm Square**



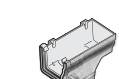
CODE  
RON1

**Stopend Outlet - L/H 65mm Square**



CODE  
RON2

**Stopend Outlet - R/H 65mm Square**



CODE  
RON3

**68mm Pipe & Fittings**

**Pipe**



CODE  
RP2.5

**112½° Offset Bend**



CODE  
RB6

**Shoe (with fixing lugs)**



CODE  
RB4

**Pipe Clip**



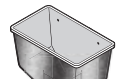
CODE  
RC4

**8mm Downpipe Spacer Bracket**



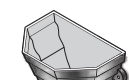
CODE  
RC9

**Universal Hopper**



CODE  
RH1

**Ogee Hopper (with fixing lugs)**



CODE  
RH4

**Pipe Socket (with fixing lugs)**



CODE  
RS2

**67½° Branch**



CODE  
RY1

**Sq/Rd Downpipe Adaptor**



CODE  
RDS2

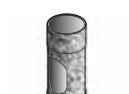
**Universal Rainwater Adaptor**



CODE  
D96

Connects to 110mm Drainage

**Access Pipe**



CODE  
RX1

Important when ordering:  
To indicate "Cast Iron" on your order  
the following code suffix should be  
used: CI-Cast Iron.