

beaufort[®] Range

Advanced Plus Steel Replacement System

The perfect solution for the replacement of existing steel windows

www.blyweertbeaufort.com



Blyweert Beaufort Aluminium Limited
Queensway Meadows | Newport | NP19 4SQ

Tel: 01633 29 40 40

Fax: 01633 29 40 41

Email: info@blyweertbeaufort.com

www.blyweertbeaufort.com



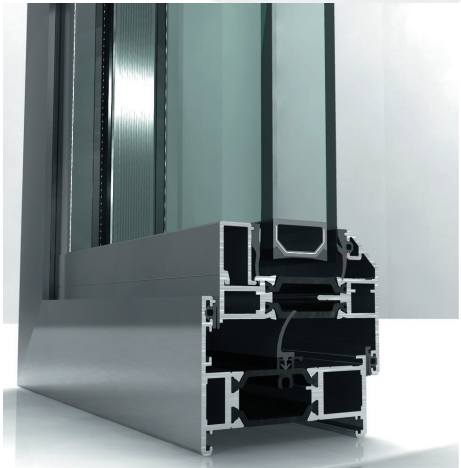
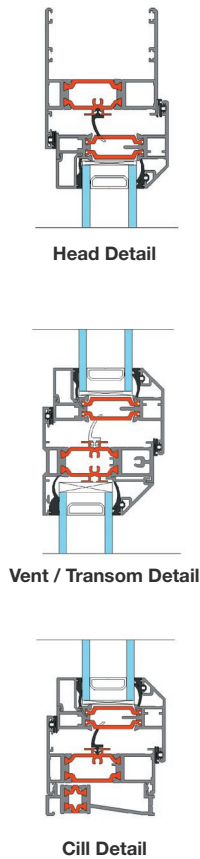


Advanced Plus Steel Replacement

The perfect solution for the replacement of existing steel windows. Available in a wide range of styles and designs including top, side and bottom hung. Designed to replicate the appearance and slim sight lines of steel windows whilst offering superior security, weather and thermal performance.

Design Features

- Slim sightlines to match existing steel windows
- Internally beaded for ease of site glazing on high-rise applications
- Double beaded option allow for internal glazing without the use of dummy vents
- Unique polyamide thermal break design to improve thermal performance
- Integrated deep head profiles for ease of trickle ventilation
- Accommodates standard hardware including friction stays and shoot bolt locking



Sizing

Minimum Height	Maximum Height
350mm	1500mm
Minimum Width	Maximum Width
350mm	1250mm
Maximum Sash Weight	
50kgs**	

Variations
Sash size and operation will depend on hardware used.
Sash heights, widths and weights are dependent on style and design.
**The sizes detailed above are for guidance only.
Please contact our Technical Office for further details

Options

- Accommodates 24mm - 44mm DGU's for thermal and acoustic performance
- Double beaded option allow for internal glazing without the use of dummy vents
- Dedicated fixing straps for ease of installation
- Full range of customisable hardware available
- Available in single and dual colour options including metallic finishes



Performance

Advanced Plus Steel Replacement System provides you with the very highest in performance. This system boasts an array of accreditation and performance criteria.

- U Values as low as 1.3w/m² K (DG Unit)
- Window Energy Rating 'A' (DG Unit)
- Level 4 - Code for Sustainable Homes
- Secured By Design
- Kitemark to BS4873
- Kitemark to BS7950
- BBA Accredited

Applications

The Steel Replacement System is flexible and versatile and can be specified for a range of applications including:

- New build or refurbishment projects
- Domestic and light commercial
- Residential and social housing
- Low, medium and high rise
- Conservation & Heritage Areas
- Listed & Period Buildings
- Conservatory walling