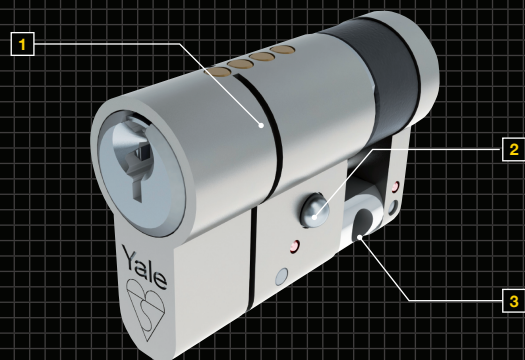


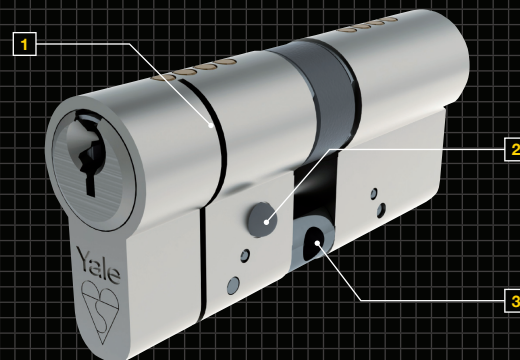
# Fold Guide

# Yale® Anti-Snap Cylinder

Introducing our new **defence mechanism**



Euro Single Cylinder



Euro Double Cylinder



Euro Turn Cylinder

## 3 separate lines of defence to deter even the most determined attack

**1 First line of defence**  
**Snap-Off front section** of the cylinder if attacked will sacrificially come away which will then give the intruder less of the cylinder to grip.

**2 Second line of defence**  
**Hardened Grip-Deflectors** which make gripping the rest of the cylinder difficult.

**3 Third line of defence**  
**Hardened Reinforced Bar** is designed not to snap, but to flex in a way that will defeat the vast majority of intruders.

## Same great features from the locks you have come to trust

In addition to these new lines of defence the Yale Anti-Snap cylinder still has the same great features that you would expect from the original Yale Kitemarked cylinder.

Extra peace of mind comes built-in as standard, same great quality from the name you trust.

**ANTI  
DRILL**



**ANTI  
SNAP**



**ANTI  
PICK**



**ANTI  
BUMP**



## Meeting the latest Standards gives peace of mind your home is secure

The Yale Anti-Snap cylinder has been independently tested to ensure that it meets the latest euro profile cylinder Standards. Designed to offer a new line of defence, the cylinder not only meets the British Standard Kitemark, but it has also successfully passed the Sold Secure SS312 Diamond Standard.

This Standard, which is endorsed by the Master Locksmith Association, has been recognised as being one of the hardest attack tests for euro profile cylinders.

BS EN 1303:2005 classification.

|   |   |   |   |   |   |   |   |
|---|---|---|---|---|---|---|---|
| 1 | 6 | 0 | 1 | 0 | C | 5 | 2 |
|---|---|---|---|---|---|---|---|



# Yale® Anti-Snap Cylinder

## Introducing our new defence mechanism

The Yale Anti-Snap cylinder is our new defence mechanism against the latest form of euro profile cylinder attack.

### NEW Intelligent design the Anti-Snap cylinder from Yale

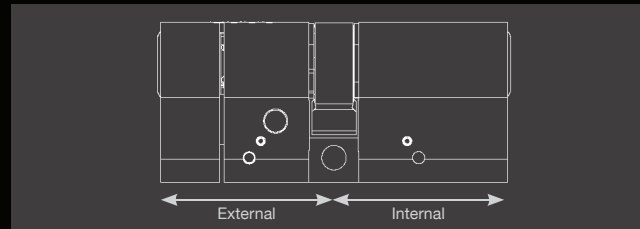
Over the years cylinders have been developed to withstand known attack methods, however, they are now vulnerable to a new form of attack which does not need specialist equipment or expert knowledge.

Yale has recognised the need for a stronger form of protection and has developed the new Anti-Snap cylinder which has additional defences built-in to offer a new line of defence.

They have also been independently tested to meet the latest Euro Profile Cylinder Standards.

### Selecting your cylinder size make sure you get the right cylinder

The Yale Anti-Snap cylinder is measured from the edge of the cylinder to the centre of the cam and has a specific external and internal side.



**Step 1:** Remove your cylinder from the door by un-screwing the fixing screw.

**Step 2:** Measure each side of the cylinder to the centre of the cam making sure you indicate which is the external side and internal side.

**Step 3:** Purchase your new Yale Anti-Snap cylinder.

**Step 4:** Due to the security features of the product to fit your new cylinder you will need to take the door handles off the door and place the cylinder in position from the outside of the door.

**Step 5:** Secure the cylinder in position with the fixing screw provided and re-fit your door handles.

For further information, please contact:

**Builders Merchants and Independent Retail Customers:**  
Tel: 0845 223 2126 or Email: [info@yale.co.uk](mailto:info@yale.co.uk)

**Locksmith and Architectural Ironmonger Customers:**  
Tel: 0845 302 4765 or Email: [locksmiths@yale.co.uk](mailto:locksmiths@yale.co.uk)

**Fabricator and Installer Customers:**  
Tel: 0845 223 2128 or visit [www.yale.co.uk](http://www.yale.co.uk)

**Consumer Helpline:**  
Tel: 01902 364647 or visit [www.yale.co.uk](http://www.yale.co.uk)

May 2011 Recorder code: YASCYDLA5



## Introducing our new defence mechanism

Intelligent design with the new Anti-Snap cylinder from Yale



ASSA ABLOY

An ASSA ABLOY group brand

An ASSA ABLOY group brand

ASSA ABLOY