

your home *made beautiful*
whatever the *style, period or location*



EAS i FOLD

Panoramic Sliding Doors



Watch the
EASI-FOLD Doors Video



Enjoy the Practicality of Individually *Sliding Doors*

The innovative and revolutionary EASi-FOLD Doors have been designed for practicality and performance.

The effortless sliding design enables you to maximise your view of the outside and benefit from more light within your home.

EASi-FOLD is a high-performance, secure and visually stunning PVCu sliding panoramic door system that's designed for hassle-free, simple operation and easy maintenance.

EASi-FOLD Doors are practical and versatile with a stunning sleek and modern appearance which is why sliding doors have become so popular with homeowners.

Consistent, straightforward and smooth operation ensure that the EASi-FOLD sliding panoramic doors create a stylish, value-adding feature to your home.

EASi FOLD

“Maximise your view of the outside with
a *stunning sliding* panoramic door”

EASi Gliding With Individually *Gliding Doors*

EASi-FOLD Doors

Open up your home to the outside with a sliding wall of glass. Transform your living space with no barriers between the outside and your home.

EASi-FOLD Doors can be up to six door panes wide. The doors have a choice of the master door being on the left or right with every other pane sliding effortlessly across a track, pivot and fold against the master door. The operation is totally different to a conventional bi-folding door as each pane operates individually.

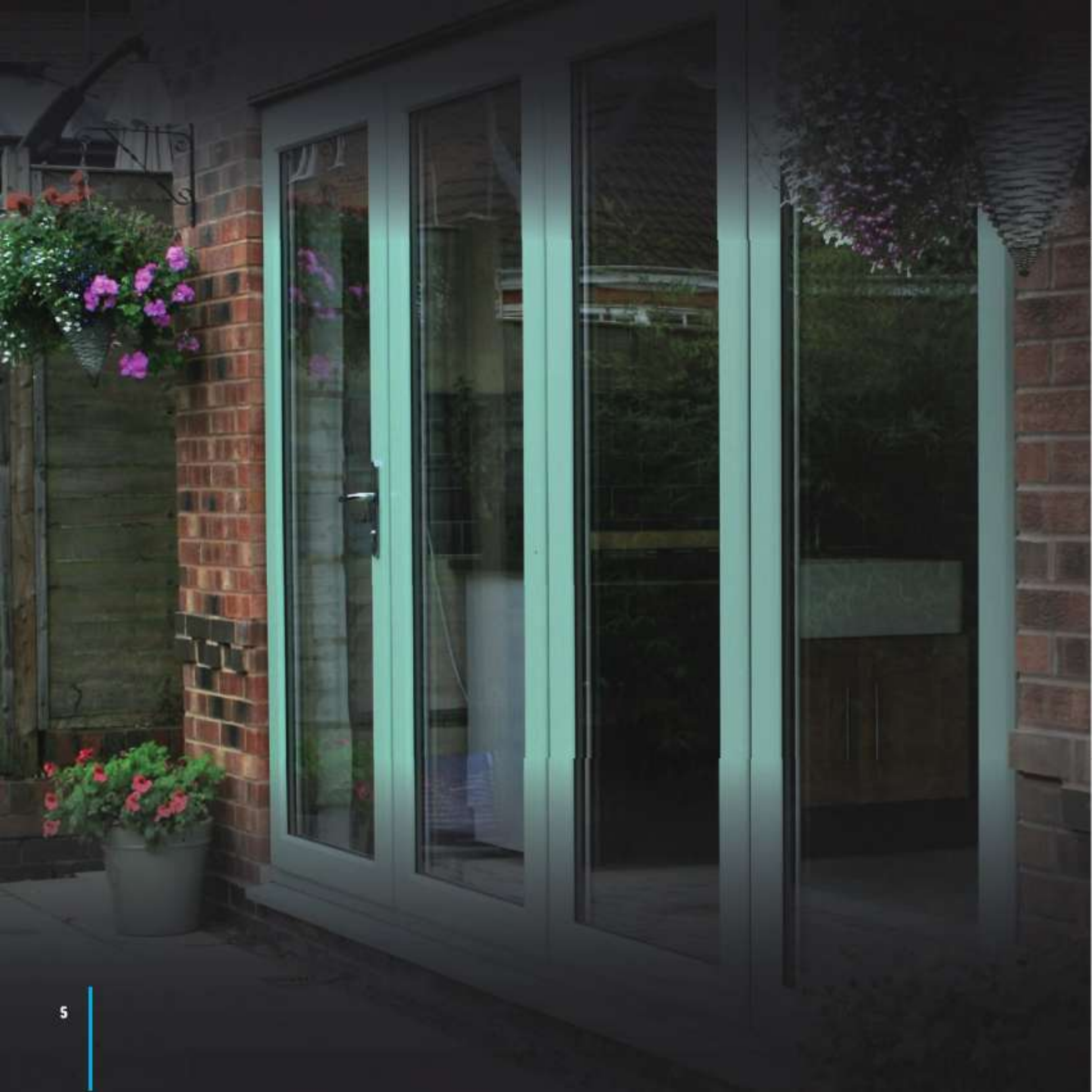
The EASi-FOLD Door combinations are all encased within a slimline package with slim sight-lines.

There are no visible hinges or handles on the sliding doors, thus providing a sleek look. The smooth operation of the sliding panoramic doors is revolutionary as they also unobtrusive and don't encroach in to the internal and external surrounding space.

EASi FOLD

"Configured to meet yours and
your properties preferences"





Sliding Doors That Keep Your Family & Home *Secure & Warm*

With ADVANCE 70 EASI-FOLD Doors you can be sure of two things, they will keep unwanted intruders out and the warmth in!

The high security locking system option is compliant with PAS 24 and Document Q, which ticks all the boxes when it comes to enhanced security.

Modern PVCu also benefits from excellent thermal performance levels. The ADVANCE 70 System is one of the leading performers with its 5 chambered system.

These qualities put the ADVANCE 70 EASI-FOLD Doors at the forefront of technological performance, ensuring that your home is secure and warm for many years to come.

EAS i FOLD

"PAS24 and Document Q compliant door options for *enhanced security*"

EASi FOLD

"Open up your home to the outside with a panoramic sliding *wall of glass*"

1



2



3



1. EASi-FOLD Doors | Fully Closed

2. EASi-FOLD Doors | Master Door Open

3. EASi-FOLD Doors | Sash No.1 Individually Slides, Pivots and Folds

Inspiration
for Your Home

4



5



4. EASi-FOLD Doors | Sash No.2 Individually Slides,
Pivots and Folds

5. EASi-FOLD Doors | Sash No.3 Individually Slides,
Pivots and Folds

Watch the
EASi-FOLD Doors Video



STANDARD *Collection*

COLOURFOIL COLLECTION



Watch the
Colourfoil Collection
Video

PREMIUM *Collection*



...more colours are available
from the RENOLIT colour swatch



Rely on it.

Window and Door Colour Options

Colourfoil Collection

Demand for coloured windows and doors in the UK is rising strongly. Homeowners are now loving colour! It's a way of personalising your home, making it look modern or giving it that traditional, authentic look.

With the Colourfoil Collection, we have a range of the most modern, traditional and on-trend colours shades and finishes.

The addition of the modern and contemporary shades of Ulti-Matt Black, Agate and Slate Grey, allow you to add on-trend colours to your windows and doors and compliment your homes style.

Traditional wood grain effects and colour shades enable you to create that period or heritage look to your home, meaning that there is a colour shade or grain effect to suit your home whatever the style, period or location.

Or maybe you prefer the standard classic White or the more traditional Rosewood and Golden Oak effect, whilst Chartwell Green and Anthracite Grey remain as popular as ever.

Whatever your colour choice you can be sure that your windows and doors will be the most aesthetically pleasing you can buy.



"Modern colour shades and traditional grained effects to compliment your home, whatever the *style, period or location*"

Adding that *Finishing Touch*

EASi-FOLD Door Options & Configurations

EASi-FOLD Doors have been rigorously tested with hardware designed to last the test of time and locking options that provide security of the highest level, PAS 24 and Secured by Design.

Our furniture has been chosen to compliment your doors and provide you with easy faultless operation with a range of colours and styles to suit the decor within your home.



There are a number of different configurations, styles and options for you to choose from to ensure your EASi-FOLD Doors meet yours and your homes requirements.

EASi-FOLD Door Configurations

There are a number of different combinations for you to choose from to ensure your EASi-FOLD door meets your requirements.

2 Sash EASi-FOLD Door Options

2 Sash
Master Door on Left
1 Opening to Left



2 Sash
Master Door on Right
1 Opening to Right



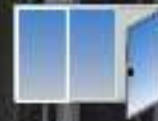
Min Width **1200mm**
Max Width **2000mm**

3 Sash EASi-FOLD Door Options

3 Sash
Master Door on Left
2 Opening to Left



3 Sash
Master Door on Right
2 Opening to Right



Min Width **1800mm**
Max Width **3000mm**

4 Sash EASi-FOLD Door Options

4 Sash
Master Door on Left
3 Opening to Left



4 Sash
Master Door on Right
3 Opening to Right



Min Width **2400mm**
Max Width **4000mm**

5 Sash EASi-FOLD Door Options

5 Sash
Master Door on Left
4 Opening to Left



5 Sash
Master Door on Right
4 Opening to Right



Min Width **3000mm**
Max Width **5000mm**

6 Sash EASi-FOLD Door Options

6 Sash
Master Door on Left
5 Opening to Left



6 Sash
Master Door on Right
5 Opening to Right



Min Width **3600mm**
Max Width **5800mm**

Keeping Your Family Home *Secure and Warm*

Security

One of the main reasons why we upgrade our windows and doors is to ensure that we provide protection to our family and home.

When choosing your new door, you want to ensure that you are making the right decision to provide the required level of protection for your family and home.

With EASi-FOLD Doors you can be sure of two things, they will keep unwanted intruders out and the warmth in!

The high security door locking system options are compliant with PAS 24, Document Q and Secured by Design, which ticks all the boxes when it comes to enhanced security.

Energy Efficiency

Modern PVCu also benefits from excellent thermal performance levels. The ADVANCE 70 System, the profile system used to manufacture EASi-FOLD Doors, is one of the leading performers with its 5 chambered system providing you with A+ rated options to keep the cold out and warmth in.

These qualities put the ADVANCE 70 System at the forefront of technological performance, ensuring that your home is secure and warm for many years to come.

What are window (and door) energy ratings?

A window or doors rating is determined by a formula which takes into account the total solar heat transmittance, the amount of the sun's heat which can pass through the glass (usually referred to as g-value); the U-value of the whole unit (frame and glass combined), how well the window or door keeps the heat in your home; and the air infiltration through the window or door seals.

To make the Rating standard across all products, a standard window / door size and configuration is used. The resulting value is then placed into a band on the scale G-A, with A-rated windows and doors being the most energy-efficient.

Did You Know?

UK Burglary Statistics

In 72% of cases, the burglar will enter through a door, of which...

27% by forcing the lock or cylinder
15% through an unlocked door
10% by breaking the door or door panel
5% enter the property with a key

In 26% of cases the burglar will enter through a window, of which...

11% force the window lock or latch
9% cut through or break the glass
6% will enter through an already open window

This means that 48% of burglaries are owing to inferior windows and doors!

Sustainability

PVCu windows and doors have a long and low maintenance lifespan, which can see them last up to 30-40 years.

What is more impressive, is the high quality reuse of PVCu, where it can be recycled up to 10 times, meaning a single window or door has a new life expectancy of 350 years!



PAS 24

EASI-FOLD *Doors*



EASI-FOLD Doors use high security locking systems, tested to PAS 24 & Secured By Design standards...

An inferior door locking system can be manipulated, snapped, picked, drilled or bumped to gain access to your property in less than 30 seconds! This is why our EASI-FOLD Doors use tried and tested security hardware on our windows and doors.

So what are my Enhanced Security options?

An Enhanced Security option is compliant with PAS 24 and Secured by Design. This means that the complete and fully manufactured door has been rigorously and independently tested by a UKAS accredited test house.

The PAS 24 standard is an extra security measure to ensure doors are up to the security standards, in case you do so happen to have a break in. The testing is based on a burglar trying to manipulate a cylinder, cut-through or crow bar a doors frame or force the lock and/or hinge side of a door. Forced entry through the locking points uses a selection of tools including 'crow bars', screwdrivers, chisels, drills and blades.

Secured by Design (SBD) is the official police security initiative that works to improve the security of buildings and their immediate surroundings to provide safe places to live, work, shop and visit.

SBD's product based accreditation scheme - the Police Preferred Specification - provides a recognised standard for all security products that can deter and reduce crime.

Energy Efficient *Windows & Doors*

The window and door profiles used to make the frames for your home offer excellent thermal insulation, as the gaskets and weathertight seals shut out draughts while the glazing reflects the heat back in to your room.

The multiple chambers within the profiles greatly improve the heat loss from your home. Aspects that will greatly reduce energy bills.

The benefits of energy-efficient windows (and doors!)

Smaller energy bills: replacing all single-glazed windows with A-rated double glazing could save you around £160 per year on your energy bills.

A smaller carbon footprint: by using less fuel, you'll generate less of the carbon dioxide that leads to global warming - typically, 680kg a year.

A more comfortable home: energy-efficient glazing reduces heat loss through windows and means fewer draughts and cold spots.

Peace and quiet: as well as keeping the heat in, energy efficient windows insulate your home against outside noise.

Reduced condensation: energy-efficient glazing reduces condensation build-up on the inside of windows and doors.

The costs and savings for energy-efficient glazing will be different for each home and each window, depending on the size, material and installer. Double glazing should last for 20 years or more.

your home *made beautiful*
whatever the *style, period or location*

Your Approved Installer is



EAS i FOLD Panoramic Sliding Doors



Selecta Systems Ltd operate a continuous design and development programme and reserve the right to modify any product without any prior notification. Photographs used within this brochure are for representation purposes only. Selecta Systems Ltd are not responsible for any errors or omissions contained within this brochure.